

# Promotion of Environmental Management

As a part of our CSR commitment, the Kyushu Electric Power Group members work together to practice environmental management, which contributes to a productive environment through raising environmental consciousness in all our corporate activities.

## 1 Environmental Policy

The Kyushu Electric Power Environment Charter was established to define the stance and direction of environmental activities to be pursued. The Kyushu Electric Power Group Environment Philosophy was developed for group companies to set forth the principles of their commitment to environmental activities. The Kyushu Electric Power Group Environment Policies were developed to specify guidelines for implementing the environmental activities.

### Kyushu Electric Power Environment Charter

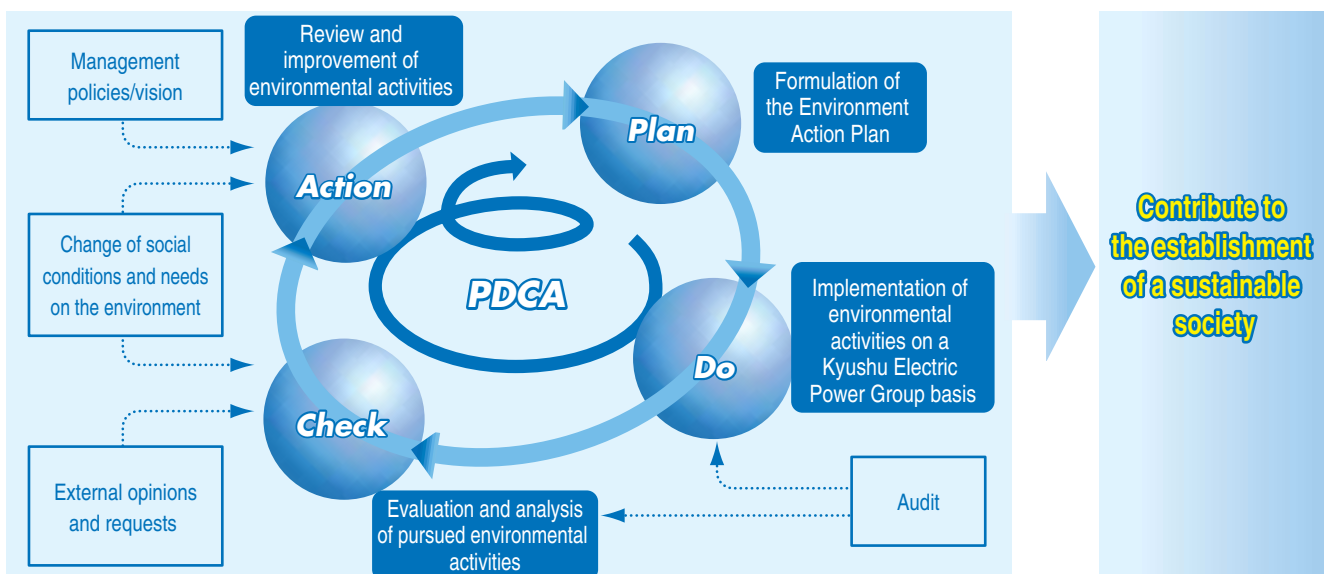
#### Towards an Environmentally Friendly Corporate Stance

1. The company shall recognize the importance of maintaining awareness of environmental conservation needs in all its corporate activities.
  - Fully realize that dealing with environmental problems is a fundamental precondition for its own existence and business activities.
2. The company shall make concerted efforts to contribute to a sound environment in all its corporate activities.
  - Strive to prevent global warming and to conserve nature and environment.
  - Actively implement environmental conservation programs that contribute to the community's well being.
  - Reduce waste output and encourage use of waste as a resource, thus promoting a recycling society.
3. The company shall promote the disclosure of environment related information in all its corporate activities.
  - Promote ease of public access to environment related information concerning the company's business activities and provide opportunities for communicating with members of society.

February 15, 2001  
President

## 2 Environment Action Plan

Kyushu Electric Power Group formulated the Environment Action Plan as a guideline for all employees to participate in the implementation of environmental management. To continue the secure implementation of environmental activities, the Action Plan is revised and improved every year based on several factors, including the evaluation of current social conditions and needs, and internal and external evaluations related to the company's environmental activities during the previous year. The summary of environmental activities implemented and their results are publicized as the Kyushu Electric Power Environment Action Report.



## FY2006 Environment Action Plan

The FY2006 Environment Action Plan consists of five core environmental action policies: promotion of environmental management, addressing global environmental issues, establishing a recycling society, maintaining harmony with the local environment, and working with society. Targets and detailed plans follow under those policies.

### Five Core Environmental Action Policies



### FY2006 Environment Action Plan Focal Points

#### 1 Solidify environment-oriented activities through effective EMS operation

- By ensuring all our business locations and all our group companies operate the EMS effectively and efficiently, we aim to further solidify our environment-oriented activities and achieve continuous reduction of environmental load.

#### 2 Steady efforts to reduce greenhouse gas emissions

- In addition to efforts in the area of energy supply, such as minimizing CO<sub>2</sub> emissions through safe and stable operation of nuclear power stations, we will also work hard at the energy use aspect, for instance by promoting the use of heat-pump water heaters and encouraging energy conservation among customers.
- We will also promote further energy and resource saving effects in offices through thorough management of our four new target areas - in-house power consumption, internal logistics, paper purchasing, and use of clean water - which were introduced this year.

#### 3 Effective and efficient promotion of zero emissions activities

- Through smooth operation of our cooperative collection system for industrial waste, as well as the expansion of items covered by the system, we aim to boost recycling rates and reduce the volume of waste disposed of at landfills outside company premises.

#### 4 Dealing thoroughly with asbestos

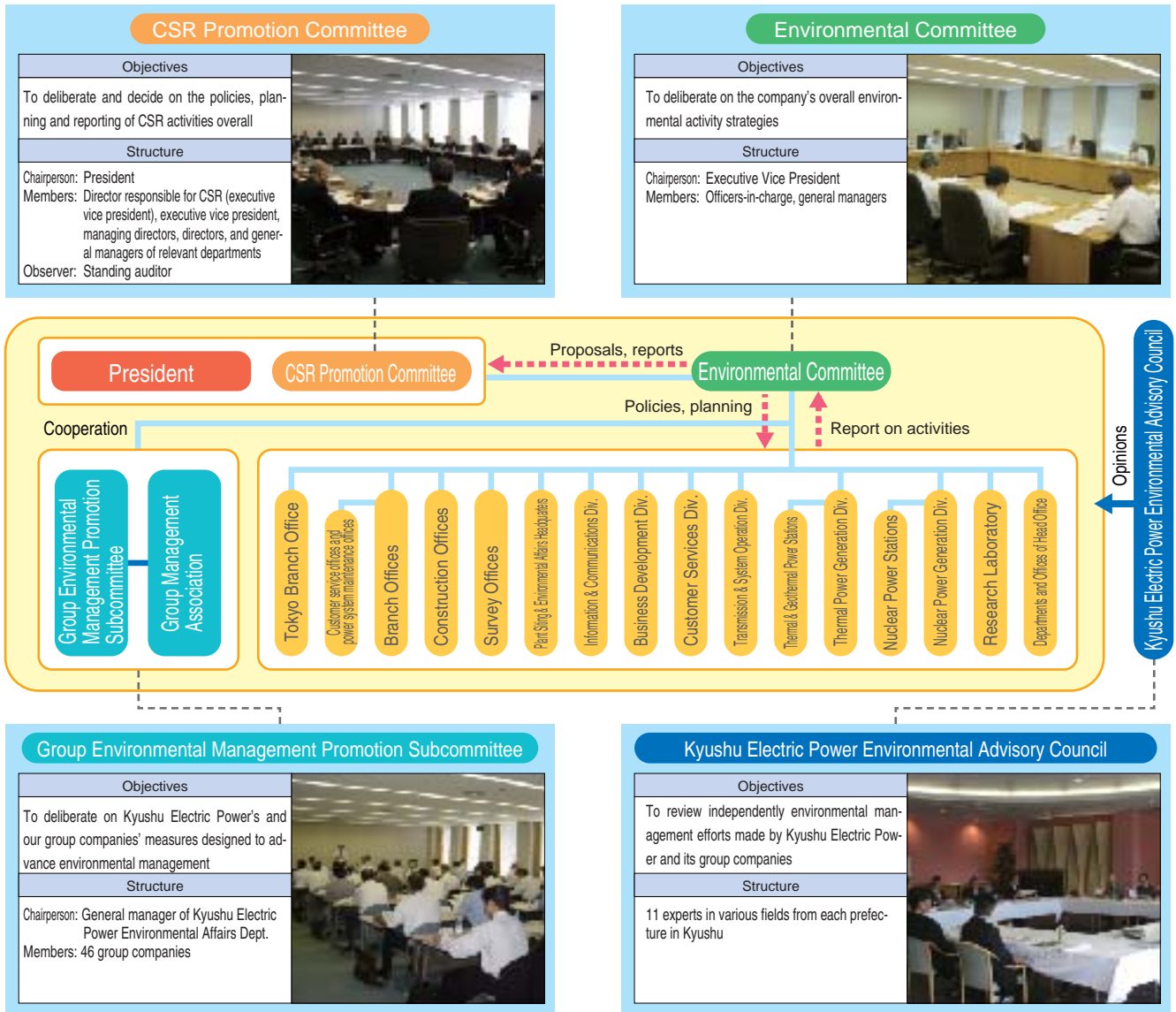
- We will continue our stringent control of spray-on asbestos and products that contain asbestos, and work towards replacement of asbestos with alternatives.

#### 5 Active communications of environmental issues with parties concerned

- We will expedite communication with as many customers as we can through the Eco Mothers Projects, publication of the Environment Action Report, and other activities.

### 3 Promotional Scheme

Kyushu Electric Power Co., Inc. has structured a company-wide scheme for the implementation of environmental management.



### 4 Environmental Management System

All business sites have established ISO14001-based EMS. Each site works steadily to achieve energy-saving and resource-saving targets, and together we work at environmental risk control through evaluation of our compliance with environmental laws and conducting environmental-accident drills.

In addition to the ongoing support that the Environmental Affairs Department at our head office has been providing to business sites since FY2004—e.g., support for improving our internal environmental auditing framework, reinforcing environmental activities, and support tailored to suit individual business sites' needs for raising environmental awareness—FY2005 saw the introduction of EMS training for environmental management

representatives and the administration office, through which we aim to raise the level of EMS operation.

Furthermore, we are proactive in training of internal environmental auditors; in FY2005, instructors from West Japan Engineering Consultants, Inc.—a company which supports acquisition of ISO14001 certification and is a member of the Kyushu Electric Power Group—held three workshops producing 123 auditors for a cumulative total of 613.



EMS training

## 5 Conformity to Environmental Regulations

We have received no recommendations, orders or penalties in connection with breaches of environmental laws and ordinances in the last five years. No legal actions regarding environmental issues have been filed against the company during this period.

We continue to pursue compliance management to engage in fair business activities in accordance with our corporate ethics. We strictly abide by agreements on environmental conservation concluded with local governments as well as laws and ordinances. In FY2005, seawater electrolysis equipment at Reihoku Power Station malfunctioned, resulting in environmental conservation agreement target figures being temporarily exceeded. Preventive measures were subsequently investigated and implemented.

## 6 Responding to Environmental Enquiries

Kyushu Electric Power responds appropriately to inquiries from outside the company.

In FY2005, a total of 48 environment-related suggestions and requests were received through the "Letter Box" on the company website, including those concerning the content of the Environment Action Report. Each correspondent received an individual response to their suggestion or request.

We value such opinions, and we will make sure to reflect them in our future environmental activities so as to ensure our environmental efforts are all they can be.

## Seawater electrolysis equipment malfunction at Reihoku Power Station

At the Reihoku Power Station on June 29, 2005, seawater electrolysis equipment, which serves to inhibit the adherence of seaweed and shellfish in seawater to pipes, malfunctioned. Residual chlorine concentration levels in discharge pits were seen to temporarily exceed the target level.

The surrounding sea was inspected by a boat-borne patrol but no effects were seen.

The matter was dealt with appropriately in accordance with the environmental conservation agreement, and similar measures have been implemented at all the other Kyushu Electric Power stations.

## 7 Emergency Measures

Damage to our facilities resulting from accidents and natural disasters can affect the surrounding environment. In preparation for such emergencies, the company installed and upgraded facilities for disaster prevention, implemented adequate education and training for our employees, and prepared manuals that help employees to better deal with such emergencies. In accordance with local disaster preparedness plans, we participate each year in nuclear power disaster drills held by local governments.



Nuclear power disaster drills at the Saga Pref. Offsite Center

### Major environmental enquiries and responses in FY2005

| Category           | No. | Major topics   | Response   |
|--------------------|-----|--|--|
| Opinions, requests | 22  | A request for the Environment Action Report and materials used in the Eco Mothers Project.         | Sent the 2005 Environment Action Report and materials used in the Eco Mothers Project.   |
|                    |     | A request to reinforce measures to minimize CO <sub>2</sub> emitted through generation operations. | Explained our environment-oriented efforts.  |
| Enquiries          | 22  | Enquiry about CO <sub>2</sub> emission factors and the Kyushu Homeland Forestation Project.        | Explained the term "CO <sub>2</sub> emission factor" and provided actual figures; sent Kyushu Homeland Forestation Project materials.  |
|                    |     | Enquiry about anti-asbestos efforts  | Explained the results of a survey into use of asbestos, and that no cases of illness or injury caused by asbestos and deemed work-related were found in surveys of current and former employees of Kyushu Electric Power and its subsidiaries (total 62 companies) up to August 5, 2005. |
| Sales promotion    | 4   | Technical proposals regarding the treatment of PCBs  | Explained that all machinery held by Kyushu Electric Power that uses PCBs is scheduled to undergo treatment to render it harmless at the Japan Environmental Safety Corporation's PCB waste treatment facility established under government supervision.                                 |



By quantifying eco-friendly conduct, we can evaluate ourselves using a points system.

**Takeshi Fujii** Hydro Power & Substation Construction Section, Hitoyoshi Power System Maintenance Office, Kumamoto Branch Office

### VOICE ● EMS at business sites

The Hitoyoshi Power System Maintenance Office was awarded ISO14001 certification in 2000. At first, some of our employees felt we were being forced into it, so there was some difficulty in maintaining and improving our EMS activities. Looking to rectify that lack of enthusiasm, we looked for ways to enliven EMS activities and came up with the concept of awarding points for everyday eco-friendly behavior, so that people could rate themselves as a way of increasing awareness of the importance of EMS. Specifically, points are awarded for things like CO<sub>2</sub> reduction, such as by walking or cycling to work, car-pooling, ensuring correct tire pressure and cutting the car engine where idling is inappropriate; not to mention separating trash, composting kitchen scraps, participating in community cleaning and tree-planting events and helping local children's associations recycling drives. These measures have helped sow the seed of EMS awareness in employees, and EMS activities are becoming livelier by the year.

