

Environmental Activities

The table on the right shows the number of group companies that have taken part in environmental activities in each fiscal year.

Data from some companies was unavailable and has therefore not been included in the figures.

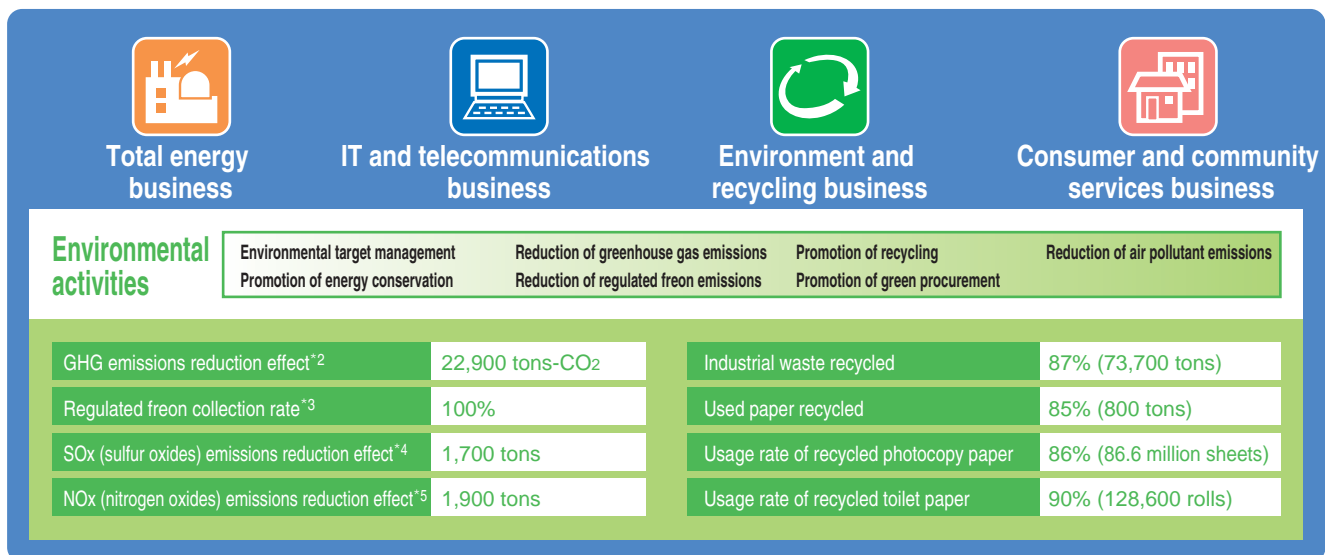
FY2003	26 member companies of the Group Environmental Management Promotion Subcommittee (Part of data for electricity and CO ₂ was provided by 40 companies.)
FY2004	40 member companies of the Group Environmental Management Promotion Subcommittee
FY2005	44 member companies of the Group Environmental Management Promotion Subcommittee (Fukuoka Energy Service has been separated from Nishinippon Environmental Energy but here the companies are recorded as one)

1 Diagram of Environmental Load Flow (FY2005)

Amount of resource input

Electric power	216.7 million kWh ^{*1}	Thermal (e.g., steam)	36.4 million MJ
Fuel (light oil, gas, A-heavy oil, etc.)	11,300 IR	Paper (photocopy paper)	101.0 million sheets
(LNG, LPG, etc.)	2,500 tons	(toilet paper)	143,000 rolls
Water	1,020,600 tons	Chemical substances designated under PRTR Law(quantity handled)	34.0 tons

Business activities



Amount of environmental load

GHG emissions	150,000 tons-CO ₂	NOx (nitrogen oxides) emissions	2,200 tons
Regulated freon emissions	4.9 tons	Industrial waste disposed	11,200 tons
SOx (sulfur oxides) emissions	1,900 tons	Used paper disposed	100 tons

*1: Power purchased excludes power consumed at power stations.

*2: Calculated assuming a baseline without the use of new or unused energy sources; figures only listed where reduction of emissions was confirmed

*3: Percentage of equipment from which mandatory level was collected at the time of inspection (mandatory level of pressure required to dispose equipment)

*4: Calculated assuming a baseline without desulphurization procedures or the use of low sulfur fuel in facilities emitting smoke (boilers, etc.); figures only listed where reduction of emissions was confirmed.

*5: Calculated assuming the baseline to be the case without denitration procedures in facilities emitting smoke (boilers, etc.); figures only listed where reduction of emissions was confirmed.

2 Environmental Targets and Records

We have established goals for our environmental activities and, through these, aim to reduce environmental load. Indeed, the targets are beginning to produce steady results. In light of social circumstances such as the Kyoto Protocol coming into effect, the Kyushu Electric Power Group is reviewing its environmental targets for FY2006 and beyond.

Environmental load — records and targets

Item		Unit	Record			Environmental targets		
			FY2003	FY2004	FY2005	FY2005	FY2006 onwards	
Measures for global environmental issues	Power consumption at offices	Quantity consumed	Million kWh	31.5	32.4	32.7	1% reduction compared with the previous year	—
		Quantity consumed per unit area	kWh/m ²	—	—	139.7	—	137 or less (FY2010)
	In-house distribution (excludes special vehicles)	Rate of low-pollution vehicle use ^{*1}	%	—	—	28	—	50 or more (FY2010)
		Fuel consumption rate	kmR	—	—	10.2	—	11 or more (FY2010)
	SF ₆ (sulfur hexafluoride) collection rate	Upon inspection	%	98	N/A ^{*2}	100	98 or more	98 or more
		Upon removal	%	N/A ^{*2}	N/A ^{*2}	N/A ^{*2}	99 or more	99 or more
	Regulated freon collection rate upon inspection of equipment		%	100	100	100	100	100
	Paper used ^{*3}		Million sheets	91.2	96.3	101.0	—	Reduction of office paper use
Clean water used		1,000 tons	186.6	180.1	179.9	—	Reduction of clean water use	
Establishing a recycling society	Recycling rate	Industrial waste	%	77	85	87	—	Approx. 85
		Used paper	%	56	74	85	100	100
	Green procurement (use of recycled paper)	Photocopy paper	%	72	84	86	100	100
		Toilet paper	%	93	93	90	100	100

*1: This is the percentage of clean-energy vehicles and fuel-efficient vehicles in the company fleet for all the group companies.

*2: Facilities owned but equipment yet to be inspected or removed.

*3: Figures for paper use in FY2005 are expressed in terms of A4 sized paper, while those for FY2003 and FY2004 are simply the number of sheets of paper.

3 Compliance with Environmental Laws

The Kyushu Electric Power Group received no improvement advisories or orders, nor was subject to any fines in FY2005 for breaches of environmental laws on the part of any group company. We will continue to comply with environmental laws and Environmental Protection Agreements executed with local governments, and shall maintain our compliance-oriented management stance in accordance with proper corporate ethics.

4 Greenhouse Gas Emission

We take every measure to collect the required level of GHGs such as SF₆ and HFC from equipment at the time of inspection. We also strive to reduce GHG emissions by curbing the consumption of energy and resources.

Unit: 1,000 tons-CO₂

	FY2003	FY2004	FY2005
CO ₂ (Carbon dioxide)	74.0	104.5	117.4
CH ₄ (Methane)	0.4	0.3	0.3*
N ₂ O (Nitrous oxide)	—	—	0.01*
HFC (Hydrofluorocarbon)	73.3	40.4	32.3
PFC (Perfluorocarbon)	—	—	—
SF ₆ (Sulfur hexafluoride)	0.2	0.02	0.01
Total	147.9	145.2	150.0

* Includes CH₄ and N₂O emitted upon fuel combustion.

5 Environmental Accounting

Environmental activity costs calculated at each Group company are summed on a Group basis in accordance with the Environmental Accounting Standards for the Kyushu Electric Power Group.

Environmental activity costs

(Unit: million yen)

Classification of environmental activities	Main activities	FY2004		FY2005		Items	FY2005 environmental activity benefits
		Investment	Expense	Investment	Expense		
Global environmental conservation	Global warming prevention and ozone layer protection, etc.	33.6	59.2	6,877.0	281.9	GHG emission reduction	22,900 tons-CO ₂
						Regulated freon emissions	4.9 tons
Local environmental conservation	Air and water pollutant, noise and vibration prevention, etc.	22.1	661.1	0.0	623.7	SOx (sulfur oxides) emission reduction	1,700 tons
						NOx (nitrogen oxides) emission reduction	1,900 tons
Resource recycling	Appropriate treatment of industrial and general waste, etc.	5.6	552.1	1.5	790.7	Proper administration according to laws and bylaws	
						Industrial waste recycled	73,700 tons
						Industrial waste appropriately disposed of	11,200 tons
						Used paper recycled	800 tons
Green procurement	Additional costs incurred by green procurement, etc.	0.0	1.0	0.0	1.8	Used paper disposed of	100 tons
						Recycled photocopy paper use	86.6 million sheets
Environmental activity management	Environmental education, operation and maintenance of EMS, environmental load measurement and monitoring, etc.	1.0	150.0	0.0	162.1	Recycled toilet paper use	128,600 rolls
						Joint seminars on environmental management	Attendance: 42 people from 40 companies
Environment-related research	Effective use of waste products	0.0	18.0	0.0	30.5	Tours to model companies implementing advanced environmental activities	Attendance: 34 people from 34 companies
						Environmental lectures	Attendance: approx. 80 people in total from 2 companies
						ISO14001-accredited companies	12 companies
						Companies with ISO14001-based systems	1 company
						Number of items in environmental databases	858
Social activities	Greening of sites, support for local environmental activities, etc.	6.9	69.0	0.0	64.2	No. of companies conducting research	4 companies
						Tree planting under the Kyushu Homeland Forestation Project	Attendance: 616 people from 25 companies
						Environment Month lectures	Attendance: 71 people from 33 companies
						Local cleanup drives	29 companies
Penalty for environmental damage	Pollution load levies under the pollution-related health damage compensation system	0.0	145.0	0.0	152.9	Overseas tree-planting activities	Approx. 1,000 trees since 1995 (1 company)
						—	—
Total	—	69.2	1,655.4	6,878.5	2,107.8	—	—

6 Environmental Education and Sharing of Environmental Information

With the aim of further promotion of environmental management, the Kyushu Electric Power Group offers integrated group-wide environmental education. We also share information around the group by posting the Kyushu Electric Power Group Environmental Information bulletin on the Kyushu Electric Power Group Network.

Environmental education programs offered

Joint seminars on environmental management	Dec.	The latest CSR trends and environmental management (Toshio Ariu, senior researcher at the Central Research Institute of the Electric Power Industry) Fukuoka Clean Energy tour
Tours to model companies implementing advanced environmental activities	Aug.	Sapporo Breweries, Ltd. (Shinkyushu Brewery)
Environmental lectures	Sep.	Nishinippon Plant Engineering and Construction Co., Ltd. (lecturer from Kyushu Electric Power)
	Feb.	Kyushu Telecommunication Network Co., Inc. (lecturer from Kyushu Electric Power)
Environment Month lectures	Jun.	Impact of Climate Change on Mankind and How to Deal With It (Prof. Yasuda, International Research Center for Japanese Studies)



Environmental activities start with employee awareness

Hirota Kidou

Accounting & Planning Section,
General Affairs Department,
Kyushu Rinsan Co., Inc.

VOICE ● Kyushu Rinsan's efforts

At Kyushu Rinsan, our main line of business focuses on greening work and the maintenance and management of Kyushu Electric Power's company forests. We are inspired to perform our daily tasks by our corporate philosophy of protecting nature and creating a lushly verdant environment.

We introduced EMS in FY2003. It involves a range of efforts in all areas of our corporate activities from big to small—turning off unnecessary lights, reducing waste and using both sides of photocopy paper in order to reduce the amount of paper used to name just a few of our start-with-what's-nearest endeavors. In fact, in the process of separating rubbish or collecting data about electricity and photocopy paper usage, one notices the change in view—i.e., from the view of our environmental activities as something special to the view that they are completely normal.

The most important aspect here is to instill this environmental awareness among all employees, so that all can go about their environmental activities in the knowledge that even the smallest action will eventually have a major effect.



7 Measures for Global Environmental Issues

With group-wide environmental targets to aim for, we are united in our commitment to implementing these measures and addressing environmental issues.

- Reducing GHG emissions through office energy conservation and eco-drives.
- Thorough recovering SF₆ (sulfur hexafluoride).
- Thorough recovering regulated freons
- Developing and offering eco-considerate products and services.

Energy

We work hard to minimize our use of energy by conserving energy and resources.

		FY2003		FY2004		FY2005			
		Unit	Companies	Qty. consumed	Companies	Qty. consumed	Companies	Qty. consumed	
Electricity	Offices	million kWh	31	31.5	32	32.4	35	32.7	
	Plants, etc.	million kWh	21	140.4	25	172.3	27	184.0	
* Fuel	Vehicles, etc.	Gasoline, etc.	1,000 kℓ	22	2.6	34	9.1	35	8.6
		Natural gas	1,000 m ³	—	—	—	—	1	0.4
	Industrial	Heating, cooling	1,000 kℓ	12	0.4	13	0.4	12	0.3
		A-heavy oil, etc.	1,000 kℓ	3	2.3	5	2.5	10	2.4
		LNG, LPG	1,000 tons	4	2.8	6	2.4	6	2.5
		Thermal	Steam, etc.	million MJ	—	—	—	—	3
Water	Offices	1,000 tons	15	186.6	18	180.1	17	179.9	
	Plants, etc.	1,000 tons	14	644.2	19	725.4	22	840.7	

* Fuel data are total of raw usage figures grouped by fuels with the same unit of calculation.

Ozone depletion substances

We employ a steadfast recovery program for freons and other substances that cause ozone layer depletion, and work hard to minimize emissions.

		FY2003		FY2004		FY2005	
		Companies	Record	Companies	Record	Companies	Record
Specified freons (CFCs)	Qty. contained	2	8.1	3	15.7	4	16.0
	Qty. released		0.05		0.5		0.3
Alternative freons (HCFCs)	Qty. contained	22	46.0	25	51.2	26	56.0
	Qty. released		4.1		3.3		4.6
Halons	Qty. contained	6	5.2	7	12.3	7	12.2
	Qty. released		0		0		0

Unit: tons

Developing natural energies —Wind and photovoltaic power

At the Kyushu Electric Power Group, we are proud to provide a comprehensive service for wind and photovoltaic power generation facilities, including design (which includes wind state measurement), construction and maintenance.

So far, we have installed approximately 90,000 kilowatts' worth of wind and photovoltaics power generation facilities in 63 places such as elementary and junior high schools, local governments, and businesses. When compared to one years' worth of power generation from oil-

fired thermal power stations, a year of generation from these facilities is calculated (according to Kyushu Electric Power calculations)* to save approximately 110,000 tons of CO₂ emissions over a one-year period.

The whole Kyushu Electric Power Group is looking forward to working as one to continue

- Companies engaged in wind and photovoltaic power generation
- Nishinippon Plant Engineering and Construction, Co., Ltd.
 - West Japan Engineering Consultants, Inc.
 - Kyudenko Co., Inc.
 - Nishinippon Environmental Energy Co., Inc.
 - Nishimu Electronics Industries Co., Ltd.
 - KYUKI CORPORATION

* Calculated assuming wind power generation usage of 20% and photovoltaic power generation usage of 12%.

our development of natural energies.



Tsubakigahana Wind Power Station in Matsue-mura, Oita Prefecture (constructed by West Japan Engineering Consultants)

The Miyazaki Biomass Recycling Power Station —Burning chicken droppings to generate power

Nishinippon Environmental Energy Co., Inc., provides comprehensive energy consulting and biomass electricity generation, making “energy and the environment” one of its major business themes.

In May 2003, the company set up Miyazaki Biomass Recycling, Co., Inc. in partnership with a local chicken farmer and broiler company with an eye to appropriate treatment of the chicken

droppings emanating from the farm. In May 2005, the company began biomass power generation operations at the power station by burning chicken droppings.

Apart from biomass power generation, the company hopes to apply its wealth of technical prowess into power generation from waste, as well as to the ESCO industry, so as to expand its business addressing environmental issues.



The Miyazaki Biomass Recycling Power Station

8 Measures for the Creation of a Recycling Society

By setting environmental targets for the whole of the Kyushu Electric Power Group we are contributing to the realization of a recycling society through implementation of the measures listed on the right.

- Promotion of recycling of industrial waste and used paper
- Promotion of green procurement
- Develop and offer environmentally considerate products and services

Waste (recycling, etc.)

The Kyushu Electric Power Group strives to reduce waste and maintain and improve recycling rates.

			FY2003		FY2004		FY2005	
			Unit	Record	Companies	Record	Companies	Record
Industrial waste	Qty. generated	1,000 tons	23	38.2	27	55.9	30	84.9
	Recycling rate	%		77		85		87
Used paper	Qty. generated	1,000 tons	25	0.8	40	0.8	44	1.0
	Recycling rate	%		56		74		85

Note: Figures may not add up to the totals due to rounding.

Paper products (green procurement, etc.)

The Group companies strive to reduce the consumption of paper products and improve green procurement rates (Usage rate of recycled paper).

			FY2003		FY2004		FY2005	
			Unit	Record	Companies	Record	Companies	Record
Photocopy paper	Qty. consumed*	million sheets	26	91.2	40	96.3	44	101.0
	Usage rate of recycled paper	%		72		84		86
Toilet paper	Qty. consumed	1,000 rolls	18	137.9	27	147.5	30	143.0
	Usage rate of recycled paper	%		93		93		90

Note: Figures may not add up to the totals due to rounding.

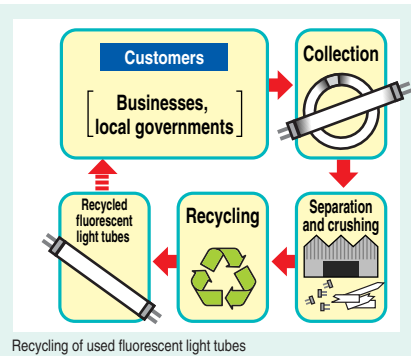
* Figures for paper use in FY2005 are expressed in terms of A4 sized paper, while those for FY2003 and FY2004 are simply the number of sheets of paper.

Japan Recycling Light Technology & System

– “New lamps from old”: Challenge of Recycling Material for Fluorescent Tubes –

Japan Recycling Light Technology & System recycles used fluorescent tubes collected from companies, schools, local governments and households. After the used fluorescent tubes are reduced to original materials such as glass, metal, phosphor and mercury, recycled fluorescent tubes are made using such original materials for sale (by outsourcing). In November 2002, the company became the first in

Japan to sell recycled fluorescent tubes manufactured using recycled phosphor, and the Yoka-Lamp, which is manufactured with recycled glass as well as recycled phosphor, made its debut in June 2004. Then, June 2005 saw the release of the Top Star, which is also made from recycled fluorescent tubes and satisfies the requirements of the Law on Promoting Green Purchasing.



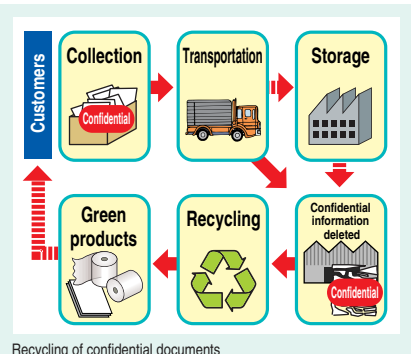
Recycling of used fluorescent light tubes

Kyushu Environmental Management Corporation

– Contributing to the Realization of a Recycling Society by Recycling Confidential Documents –

Kyushu Environmental Management Corporation is engaged in paper recycling that involves the elimination of secret information from confidential documents that used to be shredded and burned. The company also sells recycled photocopy paper and toilet tissue under a private brand, as well as stores the documents. In particular, the company uses special boxes for the secure collection of documents from its

customers, and it uses special trucks which are equipped with devices to prevent theft or scattering of confidential documents during transportation. Its treatment facility meets the security criteria of Japan Quality Assurance Organization (JQA) and was the first facility in Kyushu to receive a certification for conformity to safety measures as a recycling and treatment center.



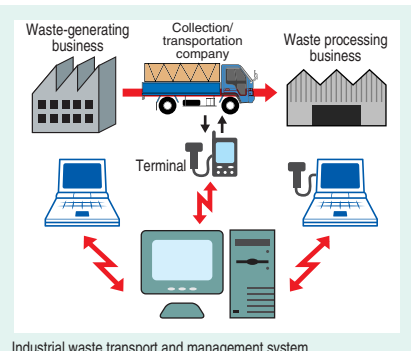
Recycling of confidential documents

Nishinippon Plant Engineering and Construction, Co., Ltd.

– Reducing waste generated from dismantling of industrial facilities –

Nishinippon Plant Engineering and Construction dismantles industrial facilities, and its aim is to eradicate industrial waste generated in that dismantling process. For instance, the company successfully recycles all industrial waste with the exception of products containing asbestos, etc. when dismantling incinerators.

In partnership with Eco Techl, an environmental NPO, Nishinippon Plant Engineering and Construction aims to improve reliability by using IC tags and GPS technology to trace industrial waste during the process from generation to processing.



Industrial waste transport and management system

9 In Harmony with the Local Environment

Each company of the Kyushu Electric Power Group uses and stores legally controlled substances in accordance with relevant laws.

Specified chemical substances under the PRTR law

The Group companies are committed to the proper use and management of chemical substances covered by the PRTR Law in accordance with all related laws and regulations.

Unit: tons

	FY2003		FY2004		FY2005	
	Companies	Record	Companies	Record	Companies	Record
Qty. handled		26.1		30.6		34.0
Qty. released into the atmosphere	4	19.8	4	21.8	5	26.0
Qty. transferred		73.2		84.4		75.4

Note: Calculated using data about specified chemical substances required to be submitted under the PRTR Law

Air pollutants

All group companies strive to control air pollutants SOx and NOx in line with relevant laws and regulations.

Unit: 1,000 tons

	FY2003		FY2004		FY2005	
	Companies	Record	Companies	Record	Companies	Record
SOx (Sulfur oxides)	3	0.7	3	1.3	4	1.9
NOx (Nitrogen oxides)		1.8		1.8		2.2

Note: Data listed herein is from those companies that are legally obliged to measure smoke volume and that have ascertained SOx and NOx emissions.

Waste containing PCBs, etc.

Waste containing PCBs and other chemical substances are properly stored and controlled according to the related laws and regulations.

That with a high concentration of PCBs is slated to be treated and rendered harmless by the mandatory deadline of FY2016 as set forth in the Law Concerning Special Measures against PCB Waste. Some companies in the Kyushu Electric Power Group began such treatment processes in FY2004. Furthermore, we inspect equipment for trace amounts of PCBs whenever we handle insulation oil of the equipment, and, if they are detected, the equipment is stored and administered with the utmost care.

Waste containing PCBs generated in FY2005

Unit: units

	High-concentrate PCBs				Trace amounts of PCB	
	Companies	Qty. contained	Companies	Qty. processed	Companies	Qty. contained
Transformers	3	35	2	10	4	15
Capacitors	13	62	1	4	1	2
Stabilizers	6	581				
Others	2	19	1	54*	1	2

* 54 liters of insulation oil stored in containers were processed.

Nishimu Electronics Industries Co., Ltd. — Aiming to make all products lead-free —

Electronic components connections on printed circuit boards have long contained soldering material that includes lead. These days, it is known that acid rain causes the lead in electronic devices disposed of in landfills to dissolve and leak into rivers and underground water tables, and therefore people are demanding lead-free soldering. Nishimu Electronics Industries produces around 40,000 printed circuit boards a year,

and is working to establish lead-free manufacturing technology to introduce when its circuit board manufacturing facilities are replaced.

Not only is Nishimu Electronics Industries replacing its electronic parts and other materials with those that are free of lead and other harmful substances, it also produces environmentally considerate products, such as those with energy-efficient designs.



Lead-free solder paste screen printer

Kyuden Sangyo Co., Inc. Environmental Affairs Dept. — Creating a clean environment —

Kyuden Sangyo is engaged in a very wide-ranging business; electricity-related businesses such as operation of environment protection facilities for thermal and nuclear power stations, fuel administration, environmental measurements, effective use of coal ash, sales of gypsum and industrial chemicals, as well as insurance sales and freight, to make just a few.

The company's Environmental Affairs Department has made a clear statement about its quality and environmental efforts by acquiring ISO9001 and ISO14001. Certified measurers, work environment measurement experts, pollution prevention managers and nondestructive inspection

technicians are just some of the approximately ninety-strong team of technical staff that, together with Kyuden Sangyo's large-scale analytical equipment, makes the company a leader in environmental analysis and testing.

Main services include:

- Air environment surveys, exhaust gas measurements and analysis
- Water-quality, soil and odor surveys and analysis
- PCB, asbestos surveys and analysis
- Noise, vibration surveys
- Metal material testing, nondestructive inspection and assessments



Kyuden Sangyo staff busy themselves with analytical tasks

10 Environmental Activities in Cooperation with Local Communities

Kyushu Rinsan Co., Inc. — Forest education —

Kyushu Rinsan maintains and administers Kyushu Electric Power's approximately 4,400 ha of forest land.

The company is a proud contributor to the Mirai Kids' Club* organized by Kyushu Electric Power Oita Branch Office, providing a range of educational activities that make active use of Kyushu Electric Power's forests.

In the Forest Work Experience program of 2005, around 100 participants learned from Kyushu Rinsan about the role that forests play

and tried their hand at forest thinning and log-cutting.

These hands-on learning opportunities are just one part of Kyushu Rinsan's environmental education activities, which the company considers to be a major corporate social responsibility. Kyushu Rinsan is dedicated to proactively providing such opportunities in future.



Environmental education activities at the Mirai Kids' Club

* Mirai Kids' Club is open to elementary school pupils throughout Oita Prefecture, and provides energy- and environment-themed events in long vacations in spring, summer, and winter that let the children roll up their sleeves and get stuck in. The club is part of the Kyushu Electric Power Oita Branch Office activities aimed at future generations.

Oita Liquefied Natural Gas Co., Inc. — Local clean-up drives —

Twice a year Oita LNG, together with Kyushu Electric Power's Shin Oita Power Station, holds a cleanup drive on the revetment roads adjacent to their properties.

The event began in FY1997, and features the president and all other staff spending a couple of hours weeding the roads and

picking up the innumerable cans that litter the roadsides.

The company is also an active participant in the cleanup drives held by the city and neighboring areas, and is determined to maintain its environmental protection stance long into the future.



An Oita LNG cleanup drive

Participation in Kyushu Homeland Forestation Program — Planting trees for the environment —

The Kyushu Homeland Forestation Program was started in FY2001 to commemorate the 50th anniversary of Kyushu Electric Power under a concept that one million trees should be planted in ten years. Personnel from each group company participate in the program as a voluntary activity.

In FY2005, a total of 616 employees from 25 group companies participated in the program and planted around 105,000 trees in 57 locations around Kyushu with local residents in the communities.



Creating a 100,000-tree Homeland Forest in Koga City

11 Active Disclosure of Environmental Information

Records of the Kyushu Electric Power Group's various environmental activities are disclosed in this report and on the Kyushu Electric Power website. The Kyushu Electric Power Group is committed to a comprehensive, team effort in promoting environmental management and disclosing information.

